

# BENITO

–Playground Equipment



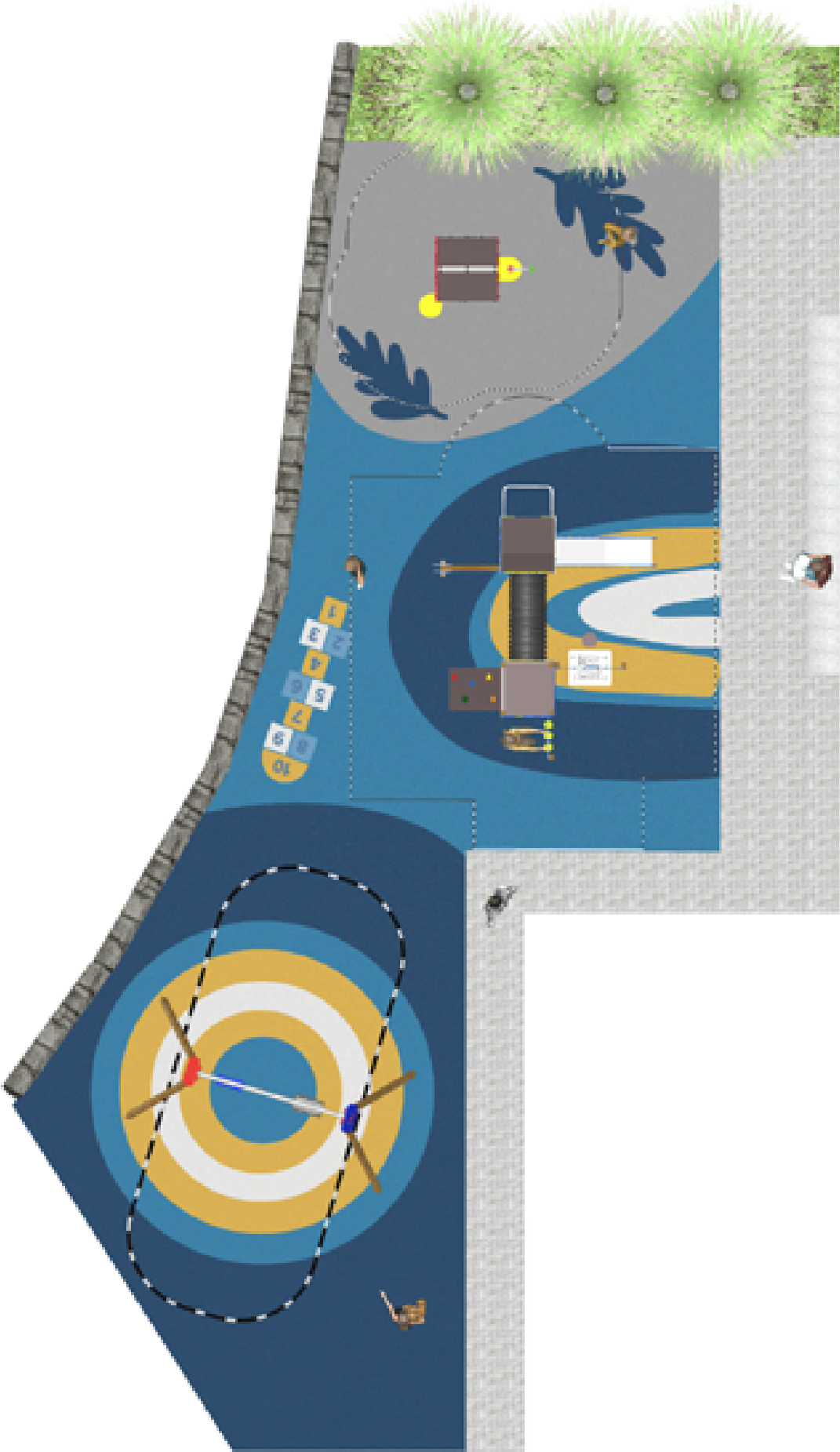
## PROJECT

PROJ-128-2022

Surface: 145 m<sup>2</sup>

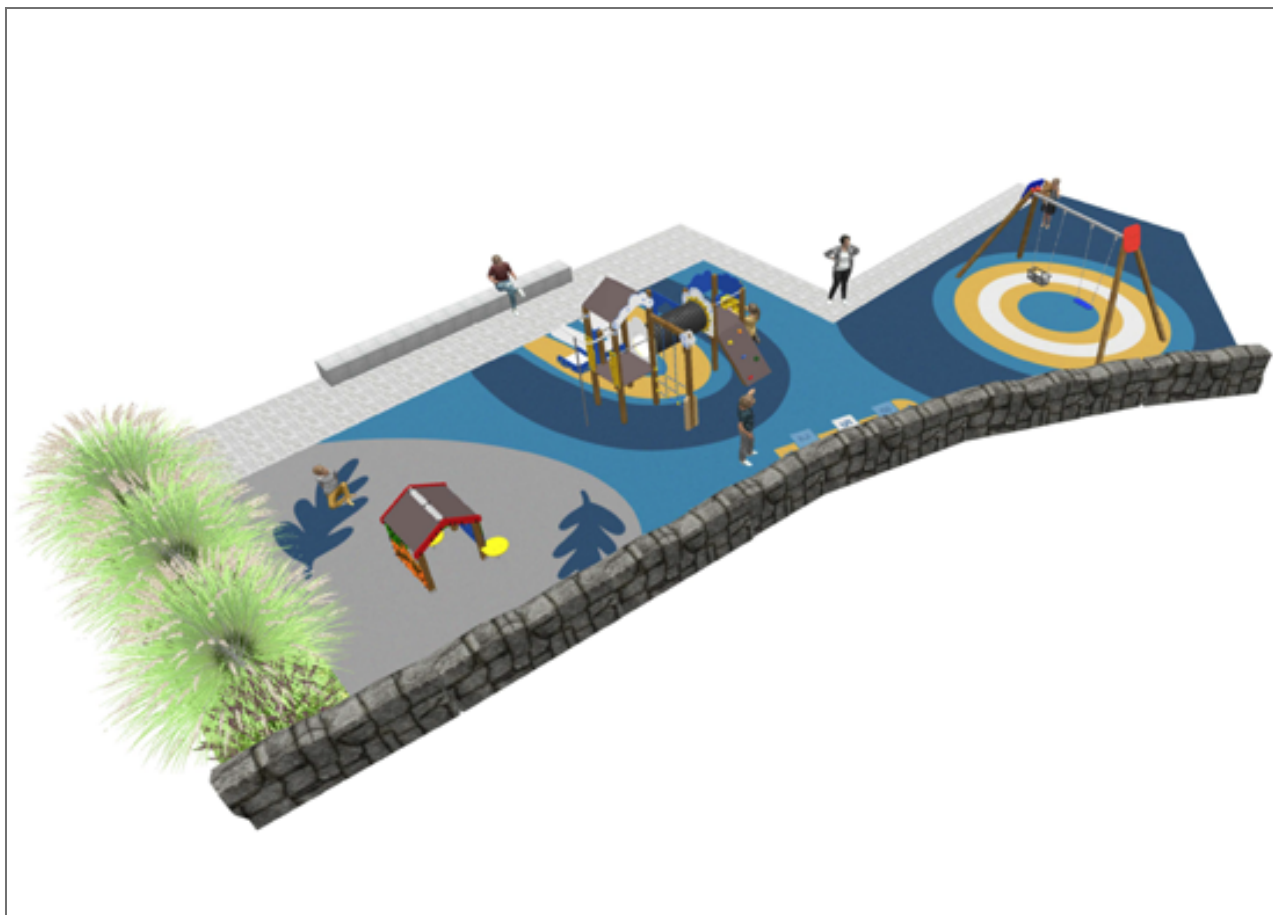
Email: [info@benito.com](mailto:info@benito.com)

Telephone: +34 93 852 1000



# BENITO

—Playground Equipment



# BENITO

—Playground Equipment

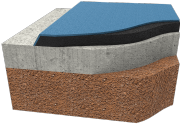







# BENITO

—Playground Equipment



Product	Description
<p>JCC</p> 	<p><b>Continuous Rubber</b> Anti-slip, non-toxic, ecological RECYCLED AND RECYCLABLE quality rubber. Continuous rubber pavements made of high quality materials according to the EN-1177 European security standard.</p> <p><a href="#">Data Sheet</a></p>
<p>JEDU01</p> 	<p><b>Vila</b> The EDUCA collection for the youngest ones: play and learn. Recognising farm animals.</p> <p><a href="#">Data Sheet</a> <a href="#">Certificate</a></p>
<p>JEDU07</p> 	<p><b>Rayo</b> The EDUCA collection for little ones: play and learn. Begin to familiarise themselves with the weather: rain, sun, clouds... Very clear concepts for an adult but a very interesting discovery for little ones.</p> <p><a href="#">Data Sheet</a> <a href="#">Certificate</a></p>
<p>JL1511000</p> 	<p><b>MADERA 1 Flat 1 Cradle</b> Swings for children made of different materials such as wood and steel. Resistant to abrasion, corrosion and bad weather conditions.</p> <p><a href="#">Data Sheet</a> <a href="#">Certificate</a> <a href="#">Certificate Conformity</a></p>