

# BENITO

Mobiliario Urbano  
Alumbrado Público  
Parques Infantiles  
Tapas y Rejas



## TAPAS Y MARCOS DE REGISTRO

REGARDS ET CADRES DE CHAUSSEE  
MANHOLE COVERS AND FRAMES



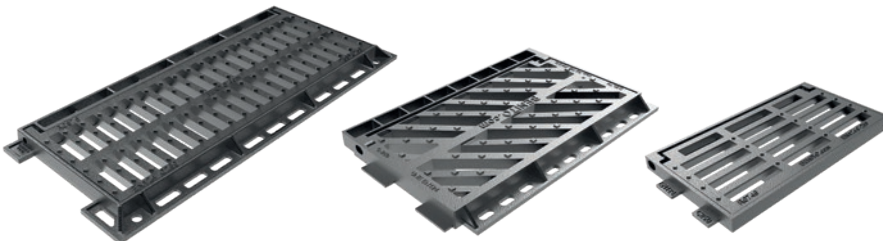
## TAPAS HIDRÁULICAS

REGARDS HYDRAULIQUES  
HYDRAULIC COVERS



## TELECOMUNICACIONES

TÉLÉCOMMUNICATIONS  
TELECOMMUNICATIONS



## REJAS DE IMBORNAL

GRILLES  
GRATES



## CANALETAS Y REJAS

CANIVEAUX  
GUTTERS



## PATE DE POLIPROPILENO

ÉCHELON EN POLYPROPYLÈNE  
POLYPROPYLENE STEP



## IMBORNAL SIFÓNICOS

AVALOIRS SIPHOÏDES  
SIPHONIC DRAINS



## TAPAS DE COMPOSITE

REGARDS EN COMPOSITE  
COMPOSITE COVERS



## HIDRANTES

BOUCHES D'INCENDIE  
FIRE HYDRANTS

**CONTACTE** y si es cliente o compra cantidad, le **MEJORAMOS** el **PRECIO**

# TAPA URBAN T2070 CON SISTEMA DE CIERRE ELASTIC

REGARD URBAN AVEC SYSTÈME DE FERMETURE ELASTIC | URBAN COVER WITH ELASTIC LOCKING SYSTEM



El sistema elastic3 consiste en tres pinzas elásticas integradas en la tapa, dos en la parte superior y una integrada de forma magistral y bajo patente en la zona de la bisagra. Con este innovador y patentado sistema elastic3 BENITO da un paso más en la eliminación total de ruidos para conseguir un mejor confort de nuestras ciudades.

Le système elastic3 consiste en trois pinces élastiques intégrées sur le couvercle, deux sont placées sur le dessus et la troisième à l'intérieur dans la zone de la charnière. Grâce à cet innovant système breveté, BENITO fait un pas de plus vers la suppression totale du bruit afin d'améliorer le confort de nos villes.

The elastic3 system consists of three elastic clamps built into the cover: two on top and the third one built into the hinge area. Thanks to the innovative and patented elastic3 system, BENITO takes another step towards the complete elimination of noise to provide greater comfort in our cities.



01

## ZONA PARA MARCAJES

Zone pour marquages  
Marking area

02

## MARCO REDONDO

Cadre rond  
Round frame

03

## SIN HUNDIMIENTO

Sans affaissement  
No sinking

04

## CAVIDAD PARA CIERRE

Cavité pour fermeture  
Cavity for locking

05

## JUNTA ESTANCA

Joint étanche  
Waterproof gasket

06

## FÁCIL APERTURA CON PARPALINA

Ouverture facile avec lève-tampon  
Easy opening with manhole hook

07

## Sistema CIERRE ELASTIC

Système de fermeture elastic  
Elastic locking system

08

## BLOQUEO 90° Y SISTEMA ANTI CAIDA 120°

Blocage 90° et système anti-chute 120°  
90° locking and 120° anti-fall system

09

## ANTI ROBO

Antivol  
Anti-theft

10

## FÁCIL CIERRE, SIN MORDEDURAS

Fermeture facile  
Easy locking

11

## 0% RUIDOS Y OXIDACIÓN

0 % de bruit et d'oxydation  
0% of noise and oxidation

# TAPAS Y MARCOS DE COMPOSITE

REGARDS ET CADRES EN COMPOSITE | COMPOSITE COVERS AND FRAMES



## DESINCENTIVO PARA EL ROBO

Dissuasif contre le vol  
Anti-theft



## LIGERA Y FÁCIL DE MANIPULAR

Léger et facile à manipuler  
Lightweight and easy to handle



## REDUCCIÓN DE RUIDO

Réduction acoustique  
Noise reduction



## RESPECTO CON EL MEDIOAMBIENTE

Respect de l'environnement  
Environment respect



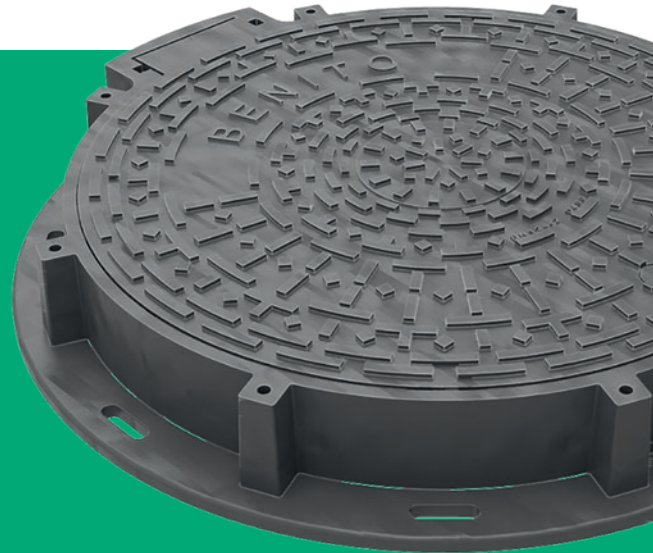
## RESISTENTE A LA CORROSIÓN

Resistente à la corrosion  
Corrosion proof



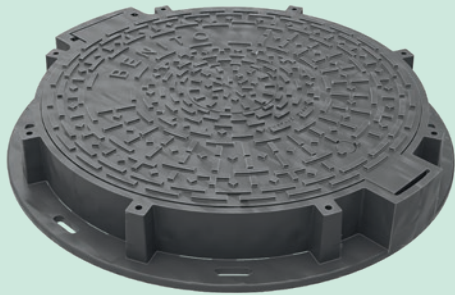
## SUPERFICIE ANTIDESLIZANTE

Surface antidérapant  
Slip-proof surface



## TAPAS Y MARCOS DE REGISTRO, DE COMPOSITE

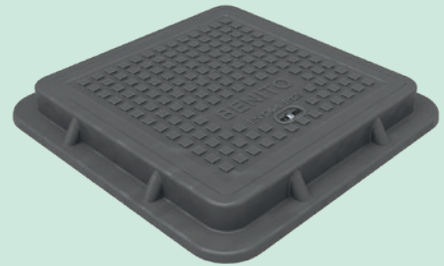
REGARDS ET CADRES DE CHAUSSEE EN COMPOSITE | COMPOSITE MANHOLE COVERS AND FRAMES



TCO2040A/L	<b>D400</b>	Øext 880	ØP 600
TCO2025A	<b>C250</b>	Øext 800	ØP 600

## TAPAS HIDRÁULICAS DE COMPOSITE

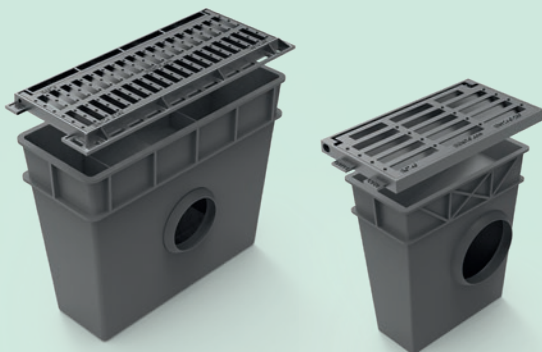
REGARDS HYDRAULIQUES EN COMPOSITE | COMPOSITE HYDRAULIC COVERS



THCO40AT	<b>B125</b>	400x400
THCO50AT	<b>B125</b>	500x500
THCO60AT	<b>B125</b>	600x600

## IMBORNALES SIFÓNICOS DE POLIPROPILENO

AVALOIRS SIPHOÏDES EN POLYPROPYLÈNE | POLYPROPYLENE SIPHONIC DRAINS



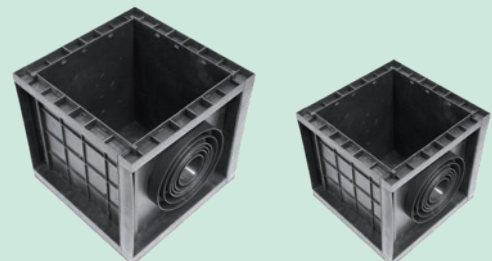
<b>SP460</b>	450x230	H 500	Ø- 200
<b>SP840</b>	840x340	H 660	Ø- 200

## ARQUETAS DE POLIPROPILENO

VOÛTES EN POLYPROPYLÈNE | POLYPROPYLENE VAULTS

### KIT DESMONTABLE. FÁCIL INSTALACIÓN.

Kit démontable. Montage facile | Removable Kit. Easy assembling.



<b>PAP4</b>	400x400	H 400	Ø75 - Ø260
<b>PAP6</b>	600x600	H 600	Ø75 - Ø260



# TAPAS Y MARCOS DE REGISTRO

REGARDS ET CADRES DE CHAUSSÉE | MANHOLE COVERS AND FRAMES

## Marco redondo

Cadre rond | Round frame



URBAN  
T2070

**D400** Øext 850 ØP 600



PUNTO  
T2063.

T2063. **D400** Øext 800 ØP 600  
T2063D **D400** Øext 850 ØP 600



TRANSIT  
T2060A

T2060A **B125** Øext 700 ØP 550  
T2060AF **B125** Øext 800 ØP 600

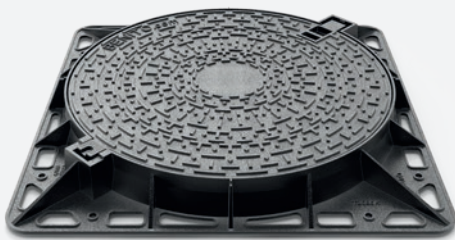


INNOVA  
T2061

**C250** Øext 700 ØP 550

## Marco cuadrado

Cadre carré | Square frame



HEXA MAX  
T2085K

T2063K. **D400** 825 x 825 ØP 600  
T2085K **D400** 1000x1000 ØP 810

## Reja con marco redondo

Grille avec cadre rond | Grate with round frame



HEXA R  
T2066R

**D400** Øext 850 ØP 600

## Marco aparente

Cadre apparent | Apparent frame



HEXA  
T2066A

**D400** 850 x 850 ØP 600



¡MARCAJES  
PERSONALIZADOS!

Marquage personnalisé !  
Customised badge marking!

# TELECOMUNICACIONES

TÉLÉCOMMUNICATIONS | TELECOMMUNICATIONS



## ENDESA

ENA1	D400	620x720
ENA2	D400	1250x720



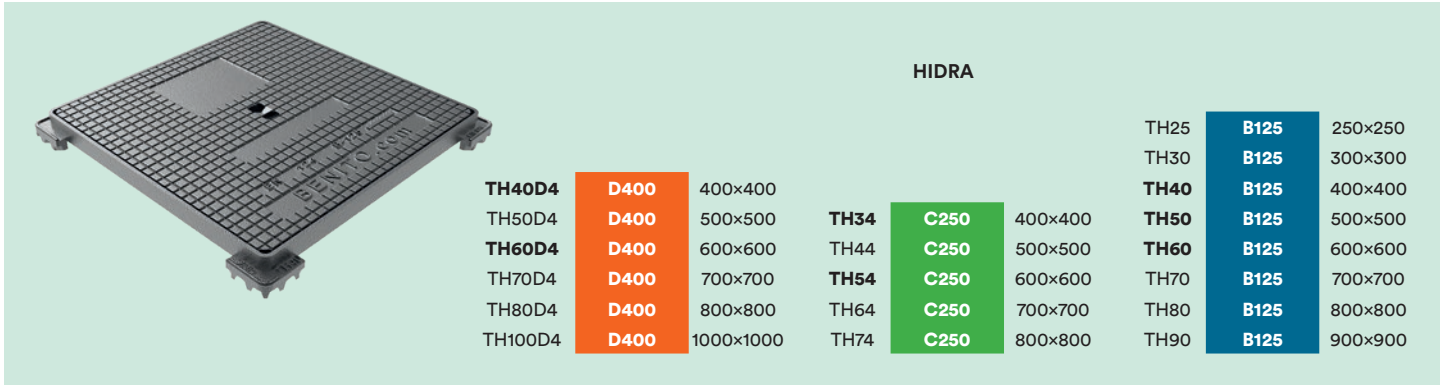
## TRIANGULAR

T1480	D400	870x870
T1480D	D400	870x1660
T1311N	D400	1260x1070

# TAPAS HIDRÁULICAS

REGARDS HYDRAULIQUES | HYDRAULIC COVERS

**¡SIEMPRE AL MEJOR PRECIO!**



## HIDRA

TH40D4	D400	400x400
TH50D4	D400	500x500
TH60D4	D400	600x600
TH70D4	D400	700x700
TH80D4	D400	800x800
TH100D4	D400	1000x1000

TH34	C250	400x400
TH44	C250	500x500
TH54	C250	600x600
TH64	C250	700x700
TH74	C250	800x800

TH25	B125	250x250
TH30	B125	300x300
TH40	B125	400x400
TH50	B125	500x500
TH60	B125	600x600
TH70	B125	700x700
TH80	B125	800x800
TH90	B125	900x900

# TAPAS RELLENABLES

REGARDS REMPLISSABLES | REFILLABLE COVERS



## HRM D4

T2056FR D400 Øext 800 ØP 600



## HRM

THH34	C250	400x400
THH44	C250	500x500
THH54	C250	600x600

THH34D4	D400	400x400
THH44D4	D400	500x500
THH54D4	D400	600x600



## HRM B1

THH30	B125	300x300
THH40	B125	400x400
THH50	B125	500x500
THH60	B125	600x600

# CANALETAS Y REJAS DE FUNDICIÓN

CANIVEAUX ET GRILLES EN FONTE | CAST IRON GUTTERS AND GRATES



CANAL

RC15	D400	750 x150	H. 120
RC20	D400	750x200	H. 170
RC30	D400	750x300	H. 200



CANAL  
RC50

D400	1000x500	H. 400
------	----------	--------

# CANALETAS DE POLIPROPILENO CON REJA DE FUNDICIÓN

CANIVEAUX EN POLYPROPYLENE AVEC GRILLE EN FONTE | POLYPROPYLENE GUTTERS WITH CAST IRON GRATE



CANAL PP

CPRF110.	D400	1010x140	H. 110
CPRF200	D400	750x200	H. 180
CPRF300	D400	750x300	H. 220

# IMBORNAL SIFÓNICO CON REJA DE FUNDICIÓN

AVALOIR SIPHOÏDE AVEC GRILLE EN FONTE | SIPHONIC DRAIN WITH CAST IRON GRATE



DELTA  
SF570

C250	570x300	H- 570	Ø- 200
------	---------	--------	--------

IMBORNAL FABRICADO EN UNA SOLA PIEZA.  
SIN PÉRDIDAS DE AGUA. FÁCIL INSTALACIÓN.

Fabriqué en une seule pièce. Sans perte d'eau. Simple d'installation.

Made of in a single piece. No water loss. Easy installation.

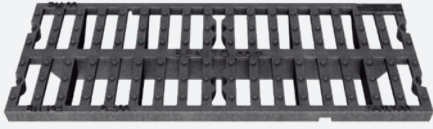


# REJAS

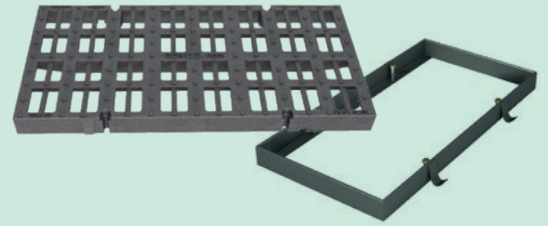
## GRILLES | GRATES

### Rejas sin marco

Grilles sans cadre | Grates without frame



RM25	<b>C250</b>	750x250			
RM40	<b>C250</b>	750x400			
RM50	<b>C250</b>	750x500	RM12D4	<b>D400</b>	500x125
RM60	<b>C250</b>	750x600	RM20D4	<b>D400</b>	750x200
RM70	<b>C250</b>	750x700	RM30D4	<b>D400</b>	750x300



R0199RN4 **D400** 980x490

### Reja cuadrada plana, con marco

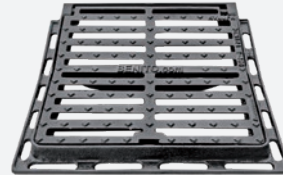
Grille plate avec cadre | Flat grate with frame



RP30FR	<b>C250</b>	370x370
RP40FR	<b>C250</b>	440x440
RP50FR	<b>C250</b>	530x530
RP60FR	<b>C250</b>	630x630
RP70FR	<b>C250</b>	760x760
RP80FR	<b>C250</b>	850x850

### Reja cuadrada cóncava, con marco

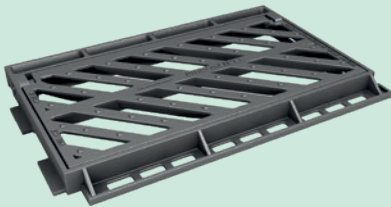
Grille concave avec cadre | Concave grate with frame



RV30FR	<b>C250</b>	370x370
RV40FR	<b>C250</b>	440x440
RV50FR	<b>C250</b>	530x530
RV60FR	<b>C250</b>	630x630
RV70FR	<b>C250</b>	760x760
RV80FR	<b>C250</b>	850x850

### Rejas con marco

Grilles avec cadre | Grates with frame



DELTA50  
R0766

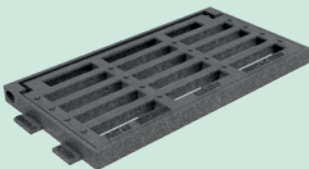
R0766	<b>C250</b>	630x400
R0745	<b>C250</b>	500x300

PARA IMBORNAL  
DE 50x30cm

Pour avaloir de 50x30cm  
For drain of 50x30cm

PARA IMBORNAL DE 40x20cm

Pour avaloir de 40x20cm | For drain of 40x20cm

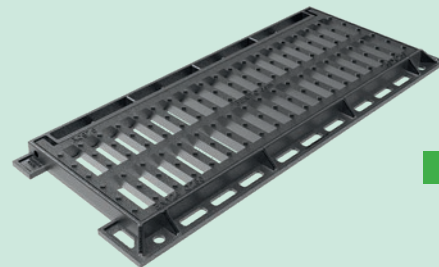


ABATIBLE  
R0746

R0764D4	<b>D400</b>	720x405
R0746	<b>C250</b>	520x260

PARA IMBORNAL DE 70x30cm

Pour avaloir de 70x30cm | For drain of 70x30cm



IMPU  
R0975

<b>C250</b>	790x340
-------------	---------



IMBORNAL  
R0954

R0954	<b>C250</b>	570x370
-------	-------------	---------

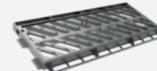


R0960D4	<b>D400</b>	720x400
---------	-------------	---------

R0960	<b>C250</b>	720x400
-------	-------------	---------



R0875	<b>C250</b>	800x360
-------	-------------	---------



R0775	<b>C250</b>	790x335
-------	-------------	---------



T2066N **D400** Øext 860 ØP 600



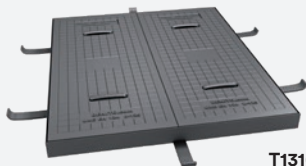
T2066KN **D400** 850x850 ØP 600



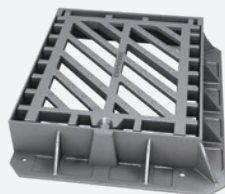
T2061NK **C250** 800x800 ØP 600



IBM3T3 **D400** Øext 825 ØP600  
IBM2T2 **B125** 750x750 630x630



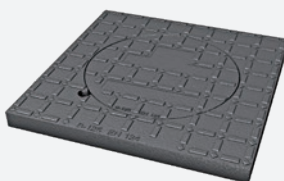
T1310HT **B125** 820x1020  
T1310DT **B125** 1020x1220



R0540 **D400** 580x520



R0785A **C250** 900x365



TC25 **B125** 250x250  
TC30 **B125** 300x300  
TC40 **B125** 400x400  
TC50 **B125** 500x500  
TC60 **B125** 600x600  
TC70 **B125** 700x700  
TC80 **B125** 800x800



T1119 200x200



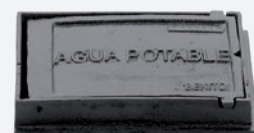
SF15AL / SF15 150x150  
SF20AL / SF20 200x200  
SF25AL / SF25 250x250  
SF30AL / SF30 300x300  
SF40AL / SF40 400x400



TC36FR **C250** 360x360  
TC46FR **C250** 460x460



BL13BAG **B125** Ø150 H180



BL24AG **B125** 240x175

## B125

### Zonas peatonales y aceras

Zones piétonnes trottoirs  
Pedestrian areas and sidewalks

## C250

### Arcenes y aparcamientos

Accotements et zones de stationnement  
Shoulders and parking areas

## D400

### Zonas de circulación pesada y normal

Zones de circulation lourde et normale  
Heavy and normal traffic areas

## E600

### Zonas portuarias

Zones portuaires  
Port areas

## F900

### Para aeropuertos

Pour les aéroports  
For airports

### PRODUCTO CERTIFICADO

PRODUIT CERTIFIÉ  
CERTIFIED PRODUCT



# BENITO

info@benito.com  
tel. 93 852 1000



Mobiliario Urbano



Alumbrado Público



Parques Infantiles



Tapas y Rejas