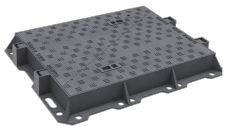
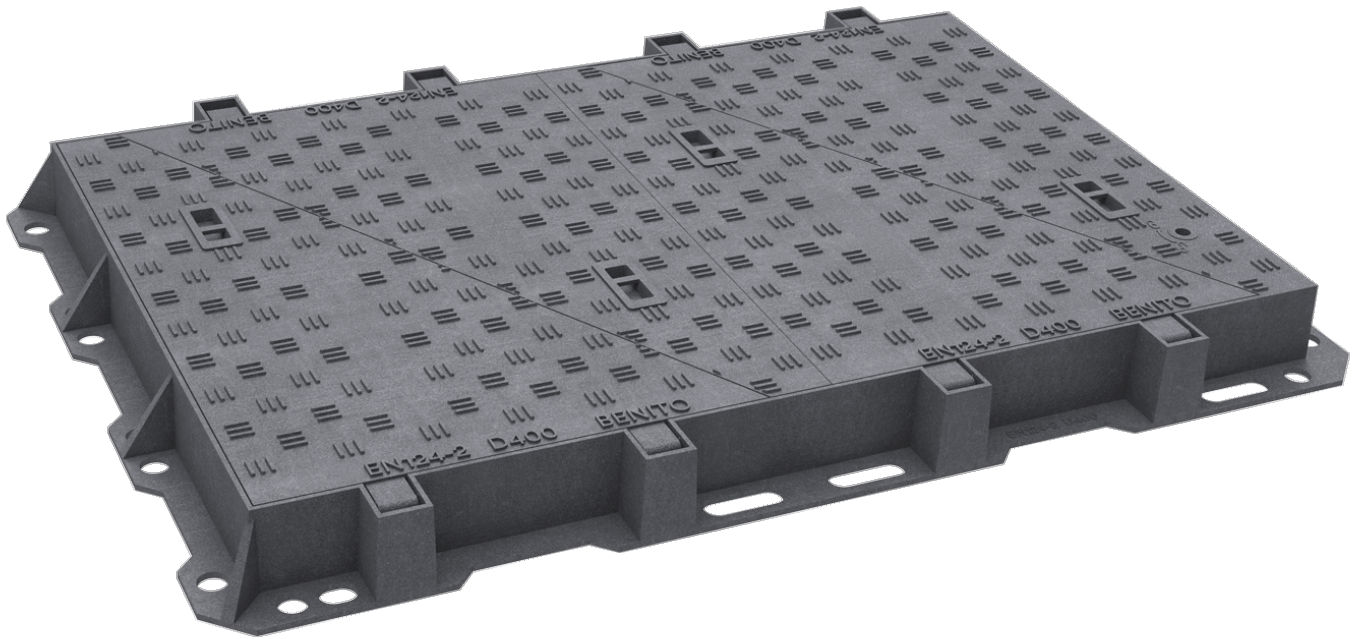
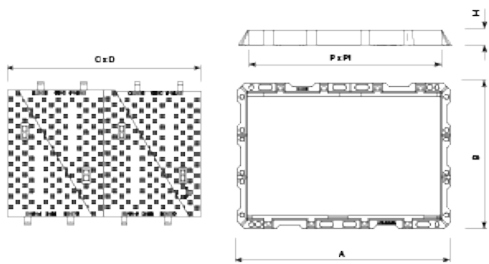


**D-400**



TMNR1D4



NR2 is designed to support medium traffic. It is perfect for installing on roads with an ADT of 1.000-20.000, particularly road carriageways (including pedestrian streets), stabilised hard shoulders and parking areas for all types of vehicles.

- Made from spheroidal graphite ductile cast iron, according to ISO 1083 (Type 500-7) and standard EN 1563.
- Compliant with the European standard UNE EN-124.

- Metal non-slip surface.

- Coated with non-toxic, non-flammable and non-polluting water-soluble black paint.

REF.		A x B	H	C x D	P x P1
TMNR2D4	D400	1330 x 910	100	1210 x 785	1200 x 750

[Project sheet](#) | [HD image](#)

The constant improvement and evolution of our products may result in some modifications of the technical specifications and characteristics of the products without prior notice.