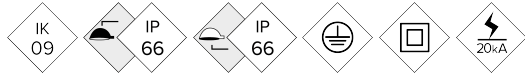
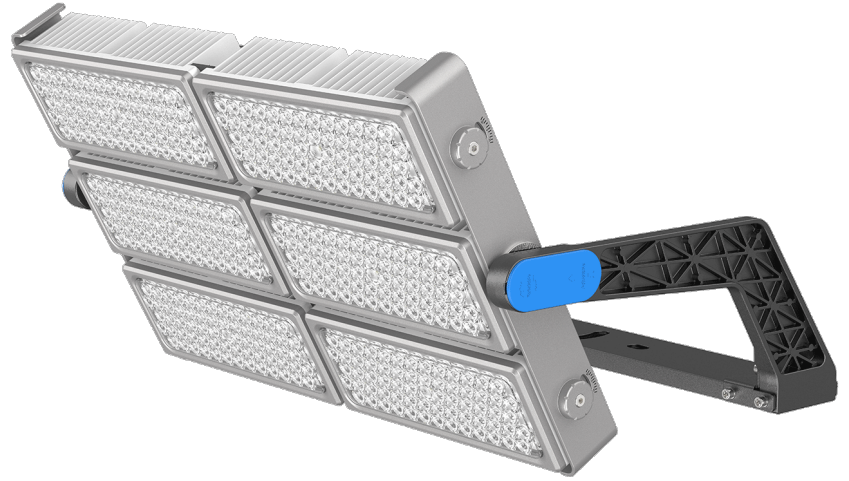


APALXL

Floodlight

APOLO XL



Flat floodlight especially designed for stadium lighting. Comprehensive range available in three sizes with extensive optical and light distributions from 500W up to 1500W to cover all applications. Can be tilted in all directions thanks to its fixing bracket. Ready for any intelligent lighting control solutions. Includes a telescopic sight to direct the floodlights precisely

MAIN FEATURES:

- High efficacy. Up to 154 lm/W net
- 3 different sizes. From 50W to 1500W
- IP ultralight compact driver
- Regulation of independent modules
- Great thermal dissipation capacity
- DALI & DMX control
- High resistance to 5G vibrations
- Housing made of an aluminium and magnesium alloy to reduce weight and improve thermal transfer
- Centralised connection box with waterproof connectors for an easy installation

APPLICATIONS:

- Large Area Sports Facilities; Football, Rugby, Athletics
- Large Infrastructures; Airports and Ports

[Project sheet](#) | [CAD](#) | [HD image](#)

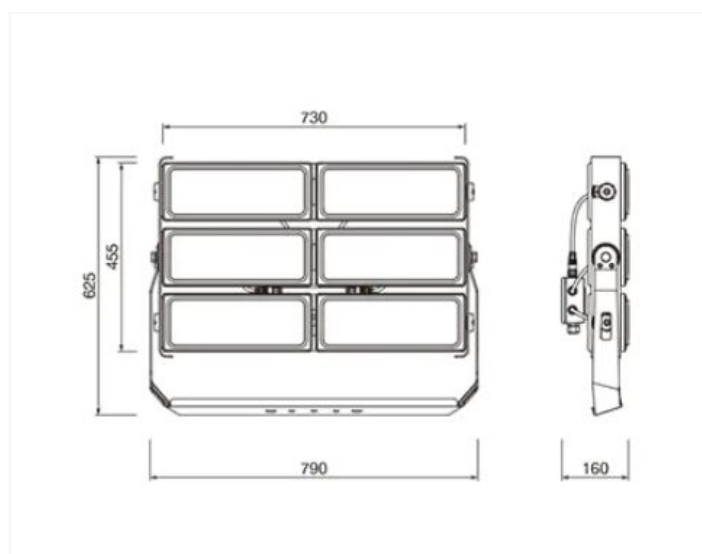
BENITO

info@benito.com
tel. 93 852 1000

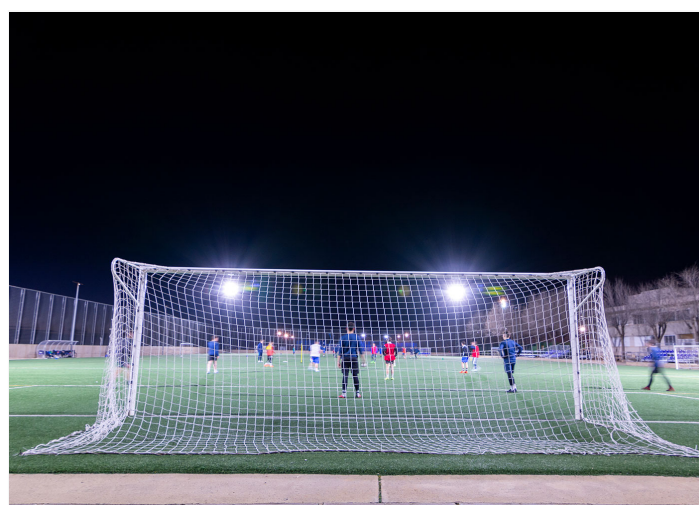
SPECIFICATIONS :

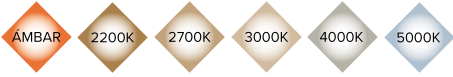
Housing material:	Injected aluminium and magnesium alloy casting EN AC-43000, EN AC-43100, EN AC-43400, EN AC-44100, EN AC-47100 according to the UNE EN 1706 standard. Modules made of extruded aluminium
Diffuser (optic system enclosure):	5mm tempered safety glass. UV filter
Fixing elements:	Stainless steel 18/8 - AISI 304
Housing:	Double compartment: driver / LED module
Sealing gaskets:	Silicone foam
IP rating (luminaire):	IP66
IP rating (optic system):	IP66
IK rating (impact resistance):	IK09
LEDs thermal dissipation:	Thermal dissipation through LEDs module. Passive convection dissipation ensuring thermal contact with the LED modules through a high-conductivity thermal transfer material
Anti-condensation valve:	Pressure-balancing valve to ensure moisture release, avoid condensation and maintain the luminaire IP tightness
Paint and finishes:	Polyester powder paint coating, electrostatically sprayed and sublimated in the oven. Resistant to corrosion
Colour:	RAL 9022. Optional: other colours
Mounting:	Fixing bracket reinforced with a U-profile
Tilt range:	From -180° to +180°
Maintenance:	Modular concept for easy component replacement: LEDs, drivers, SPD. Drivers module easily detachable by means of IP67 waterproof connectors.
Recommended mounting height:	18 - 40 m.
Driver:	Constant current adjustable and programmable driver. Embedded in the luminaire, pre-wired on a galvanised steel plate
Flow Reduction:	Dimmable driver 0-10V, DALI, DMX.
Ready4IOT - Connectivity:	<ul style="list-style-type: none"> - Autonomous multiple-level dimming or virtual midnight - Ready4IoT - Dimming by main voltage - Line switch
Surge protection device (SPD):	Type 2, 10kV and 20kA transient surge protector. Series connection with thermofuse disconnecter for a more effective protection at the end of its service life. Optional FULL PROTECTOR

DRAWING:



INSTALLATION:

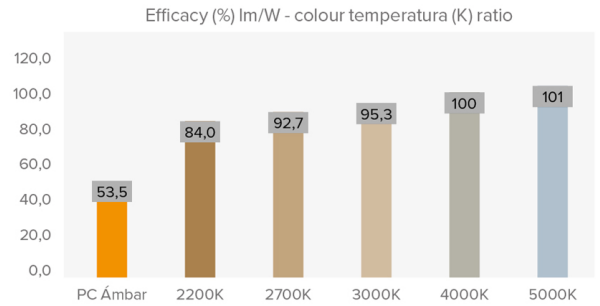




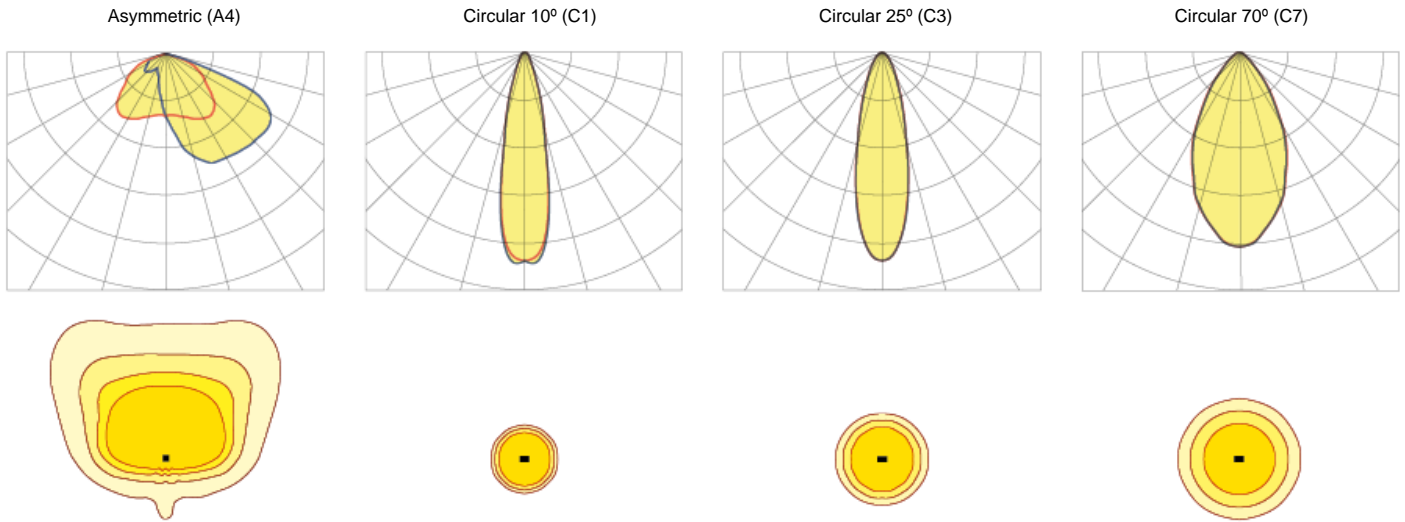
TECHNICAL DATA:

	REF.	N° LEDs	Power W	I Driver mA	Real luminous flux (T) =85°C		Initial luminous flux (T) =25°C	
					Flux lm	Efficacy lm/W	Flux lm	Efficacy lm/W
APOLO XL	APALXL	396	1200	960	184800	154	218400	182
		396	1500	1200	226500	151	273000	182

Luminous flux and efficiency at 4000°K and CRI>70.
 Luminous flux tolerance < +/-3%.
 Values may be subject to changes due to LED binning.



PHOTOMETRY:



*Show 4 recommended lighting distributions. Refer to the 18 typologies.

LEDs MODULE:

LEDs module:	BENITO-NOVATILU Zhaga standard for 8, 12 and 16 LEDs. Check colour temperature, CRI and light distributions	
Replaceable module:	Yes	
LED:	7070	
Number of LEDs:	84	
PCBs format:		
LED nominal efficacy:	182	
Colour temperature:	PC Amber, 2K2, 2K7, 3K, 4K, 5K, 5K7	
Colour rendering index CRI:	>70 (opcional >80)	
Average LED useful time L90B10:	L90B10 >100,000 hours	

OPTIC SPECIFICATIONS:

Optic system:	PMMA lenses	
Light distributions:	7 light distribution curves	
Upward light output ratio ULOR:	0%	
Downward light output ratio DLOR:	100%	
Glare index:	Between D5 and D6 (depending on the light distribution)	
Luminous intensity category:	Between G*4 and G*6 (depending on the light distribution)	
Luminous flux CIE n°3:	>95%	
Photobiological safety:	RG0 (exempt of risk)	
Initial luminous flux Tj=25°C (up to):	lm	273000
Initial luminaire efficacy Tj=25°C (up to):	lm/W	182
Real luminous flux Tj=85°C (UNE EN 13032-4) (up to):	lm	226500
Real luminaire efficacy Tj=85°C (UNE EN 13032-4) (up to):	lm/W	151

ELECTRIC SPECIFICATIONS:

Nominal maximum power (LEDs):	W	900
Maximum power consumed (luminaire):	W	1000W
Power range:	W	1200 - 1500W
Maximum current of LED:	mA	<400 (<50% I _{max})
Power supply protection classes IEC:	Class I and II	
Surge protection device (SPD):	Type 2, 10kV and 20kA transient surge protector. Series connection with thermofuse disconnecter for a more effective protection at the end of its service life. Optional FULL PROTECTOR	
Common and differential mode protection (SPD) Udc:	kV	10 y otros colores bajo pedido
Max current (8/20) (SPD):	kA	20
Thermal phase disconnection (SPD):	Yes	
Input voltage:	Vac	220-240
Input voltage (max rate):	Vac	198-264
Input frequency:	Hz	47-63
Starting current:	A	<65
Duration of the starting voltage peak:	ms	<0,3
Driver efficacy:	>95%	
Power factor 100% consumption:	>0,98	
Power factor 50% consumption:	>0,95	
Total harmonic distortion (THD):	<10	
Power consumption on standby mode:	W	<0,4
Energy class:	A++ IPEA>1,15	

OPERATING CONDITIONS:

Average LED useful time L90B10:	hours	100.000
Average driver useful life to T _p <70°C:	hours	100.000
Average luminaire useful life L90B10 (TM-21):	hours	72.167
Ambient temperature (T _a):	°C	from -35°C to +50°C
Aerodynamic resistance (C _x S):	m ²	0,445
Vibration test (15Hz 3 axis):		
Guarantee:	5 years (extensible up to 10 years)	

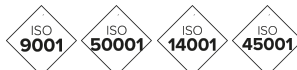
PACKAGING DIMENSIONS:

Net weight	kg	21 (driver 5)
Gross weight	kg	23 (driver 6)
Luminaire dimensions (LxWxH)	mm	790x590x130 (driver 500x150x81)
Packaging dimensions (LxWxH)	mm	820x620x160
Pieces per box	1	
Quantity per container 20ft		
Quantity per container 40ft		

CERTIFICATES:

Security certificates:	EN 60598-1 / EN 60598-2-5 / EN 62493 / IEC 62473
EMC certificates:	EN 55015 / EN 61547 / EN 61000-3-2 / EN 61000-3-3 / EN 61347-2-13 / EN 61347-1 / EN 62384
Other certifications:	IEC 62262 / EN 13032-4 / EN 62717 / EN 6272-1 / EN 6272-2-1 / EN 61643-11

Company Certifications



BENITO

info@benito.com
tel. 93 852 1000