

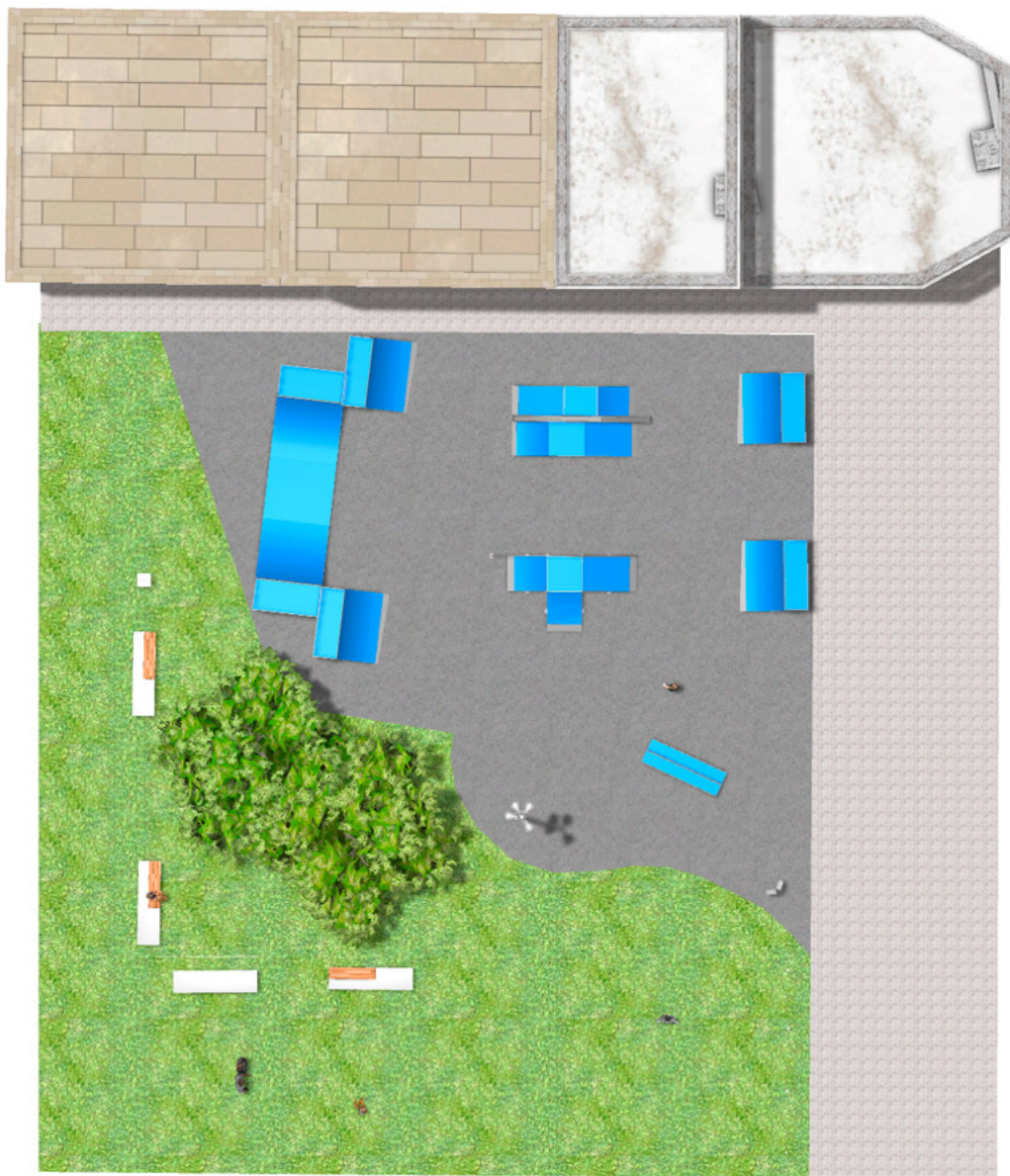
## PROJECT

PROJ-050-2018

Surface: 380 m<sup>2</sup>

Email: [info@benito.com](mailto:info@benito.com)

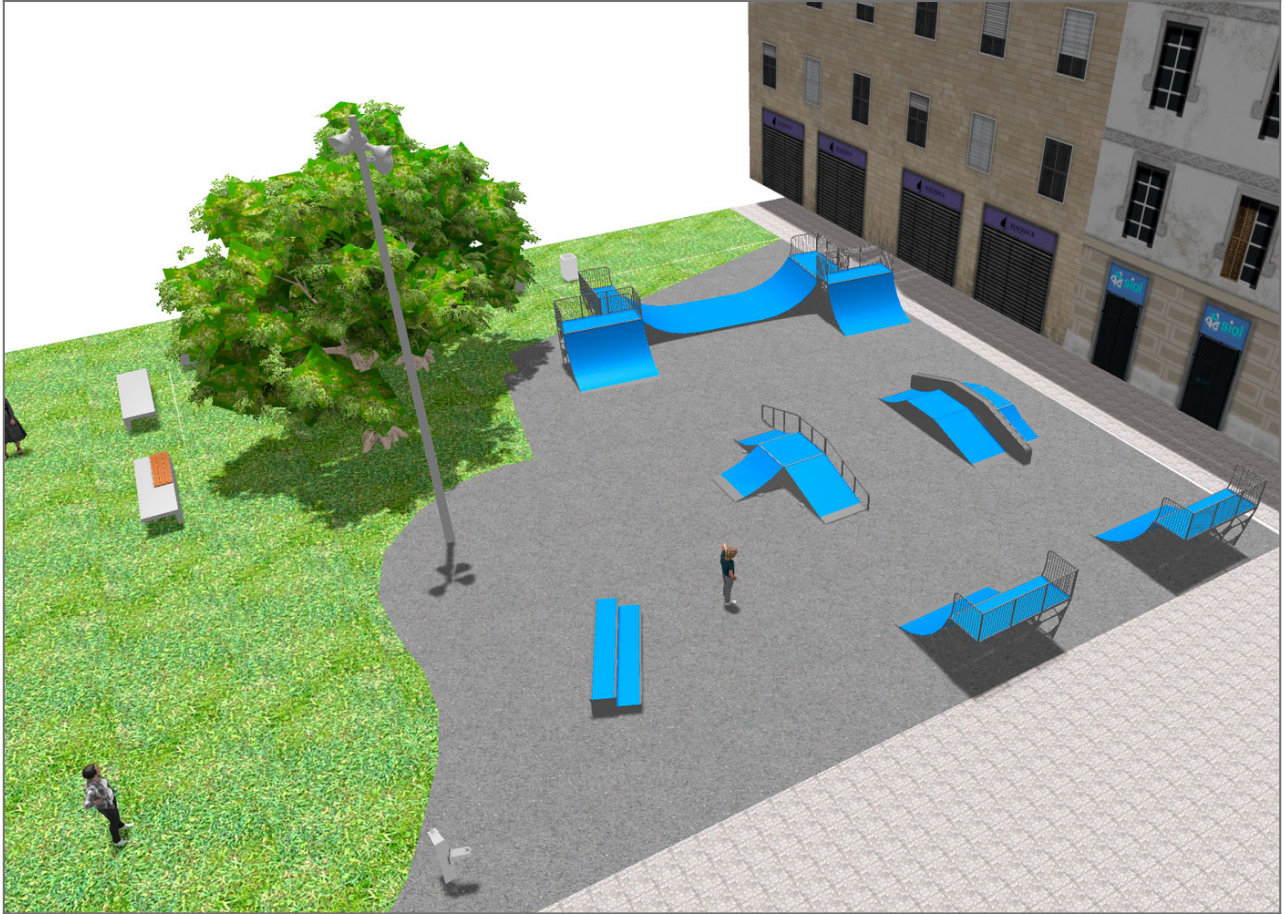
Telephone: +34 93 852 1000





# BENITO

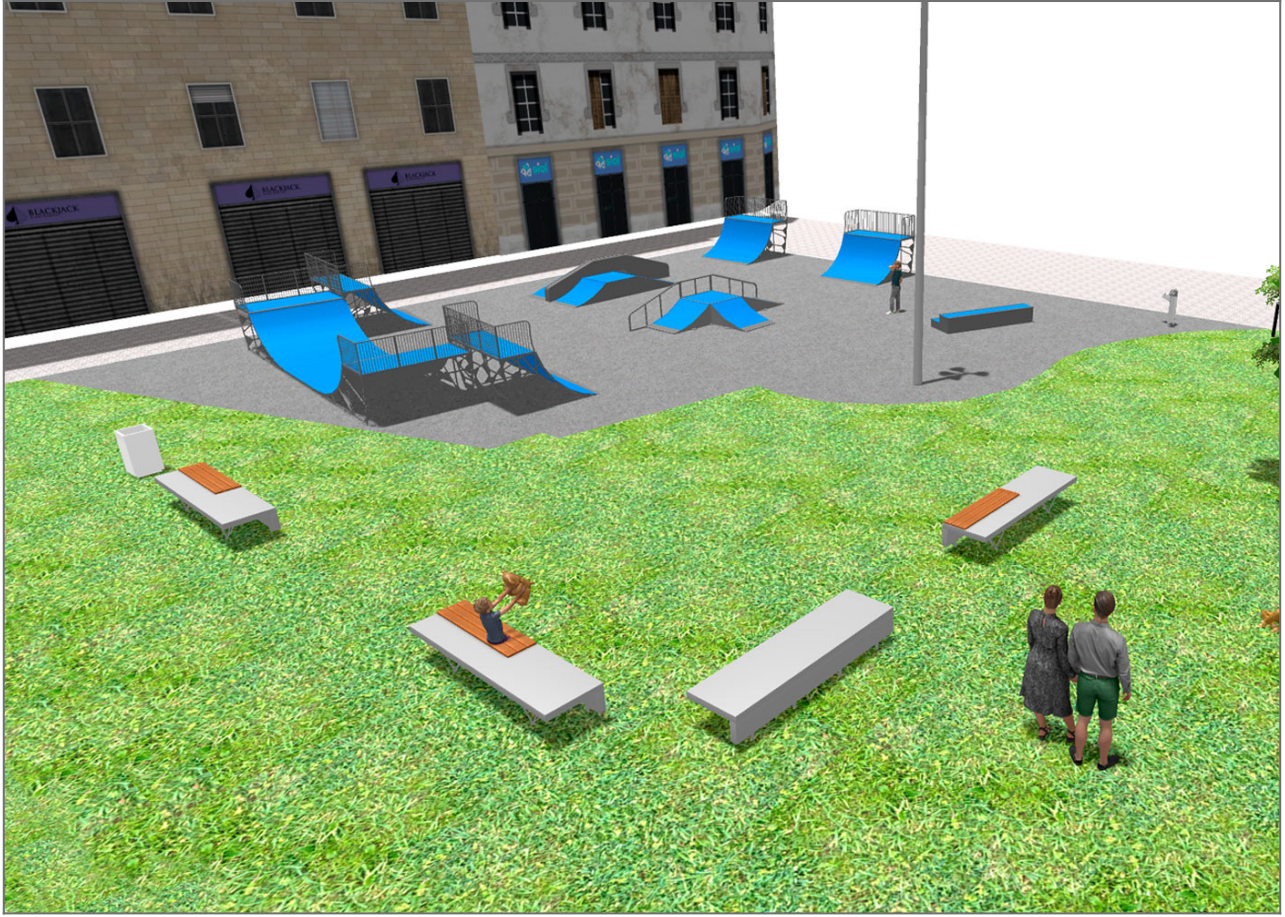
—Playground Equipment



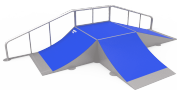
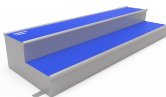
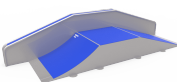




# BENITO

—Playground Equipment





Product	Description
JSK1026-KRR  	<b>Fun Box and Doublerrail 60 RRA</b>  <a href="#">Data Sheet</a>
JSK1050-K  	<b>Ollie Box A</b> The Skates elements are of modular construction that allows with the minimum effort the ability to modify the situation of the modules according to the criteria of each group of skaters. with minimum maintenance and 100% resistant to UVA rays, ice and impacts. Great adherence to the ground. The surface is not heated. Based on modular construction.  <a href="#">Data Sheet</a>
JSK1023-KB  	<b>Launch Box and Bauer Box 60 BA</b> The Skates elements are of modular construction that allows with the minimum effort the ability to modify the situation of the modules according to the criteria of each group of skaters. with minimum maintenance and 100% resistant to UVA rays, ice and impacts. Great adherence to the ground. The surface is not heated. Based on modular construction.  <a href="#">Data Sheet</a>
JSK1008-K  	<b>Quarter Pipe 140</b> The Skates elements are of modular construction that allows with the minimum effort the ability to modify the situation of the modules according to the criteria of each group of skaters. with minimum maintenance and 100% resistant to UVA rays, ice and impacts. Great adherence to the ground. The surface is not heated. Based on modular construction.  <a href="#">Data Sheet</a>
JSK2015-K  	<b>Mini Ramp 140</b> The Skates elements are of modular construction that allows with the minimum effort the ability to modify the situation of the modules according to the criteria of each group of skaters. with minimum maintenance and 100% resistant to UVA rays, ice and impacts. Great adherence to the ground. The surface is not heated. Based on modular construction.  <a href="#">Data Sheet</a>