



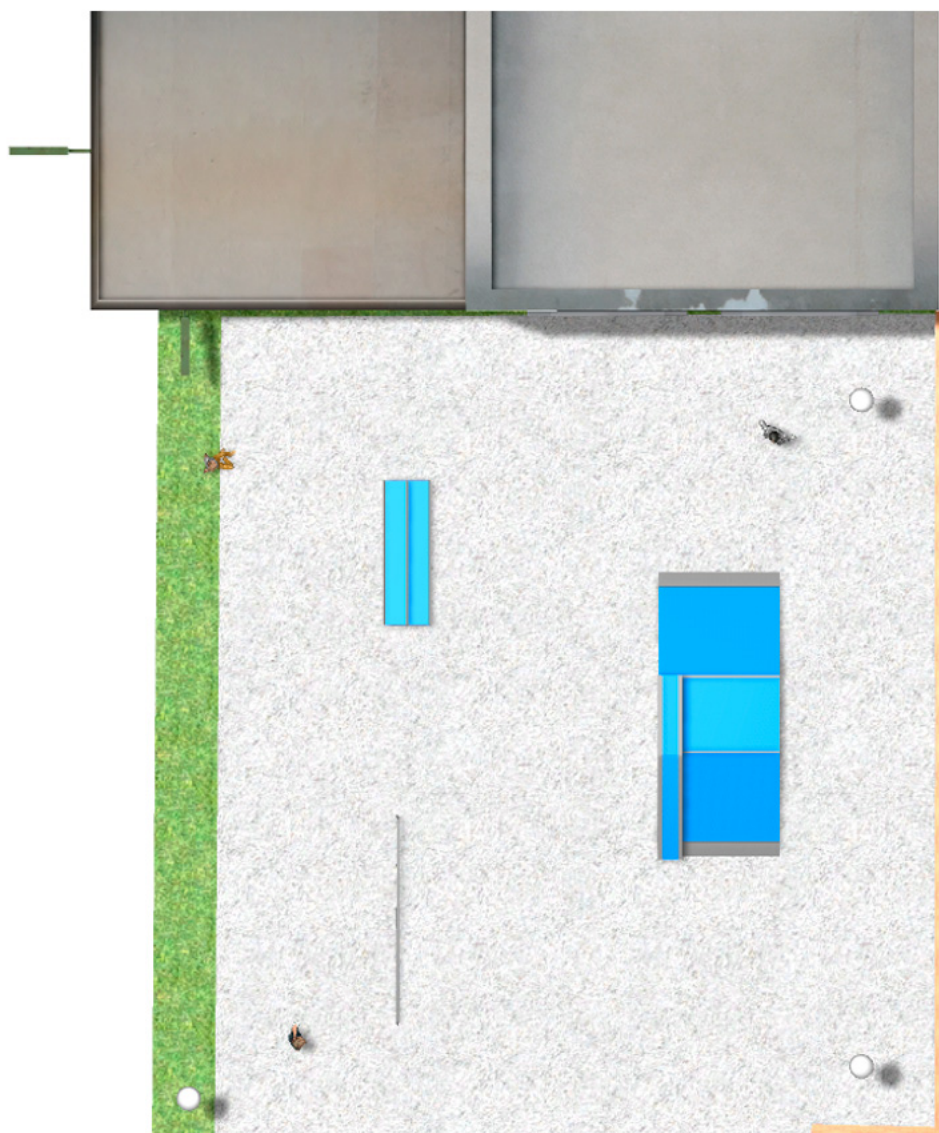
## PROJECT

PROJ-047-2018

Surface: 250 m<sup>2</sup>

Email: [info@benito.com](mailto:info@benito.com)

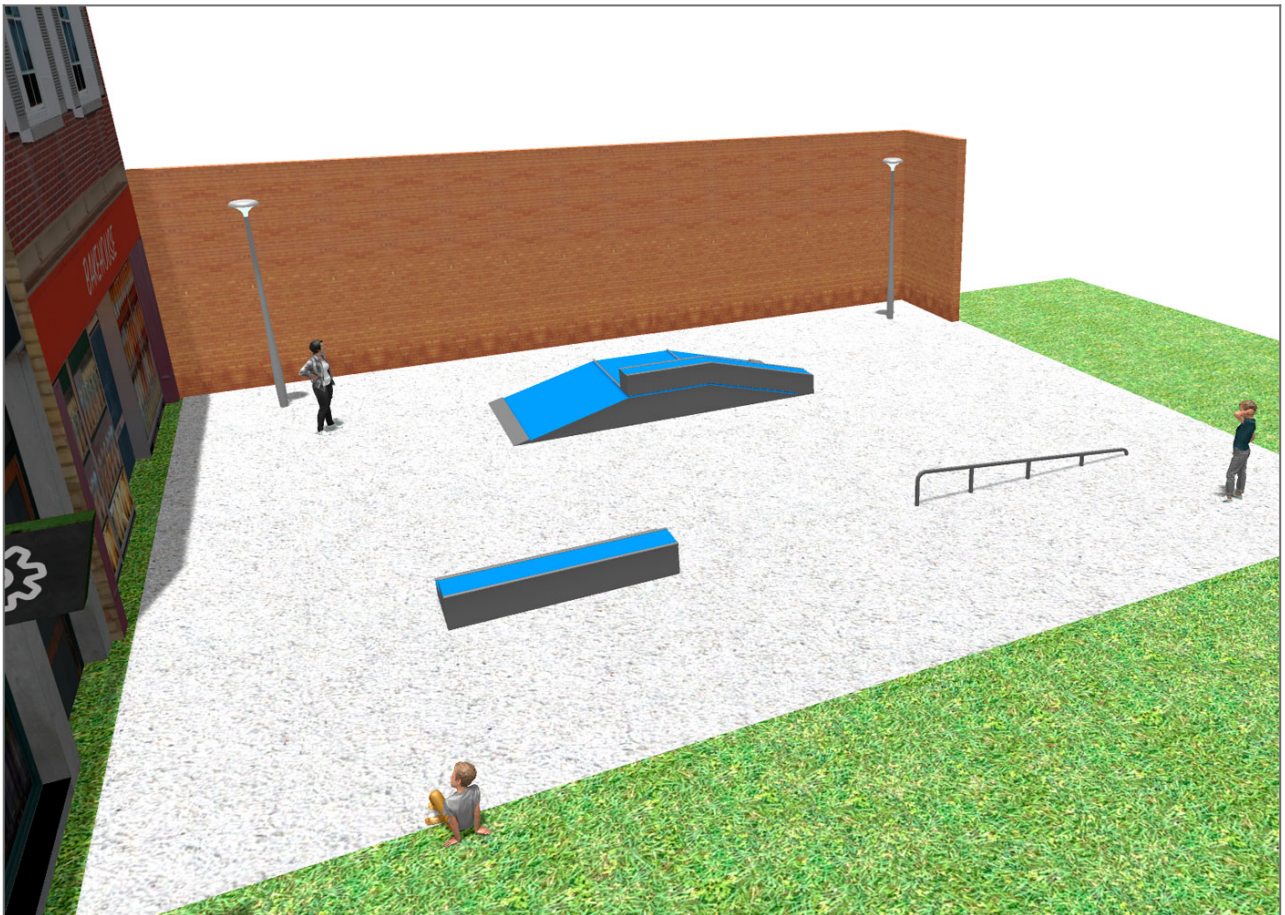
Telephone: +34 93 852 1000





# BENITO

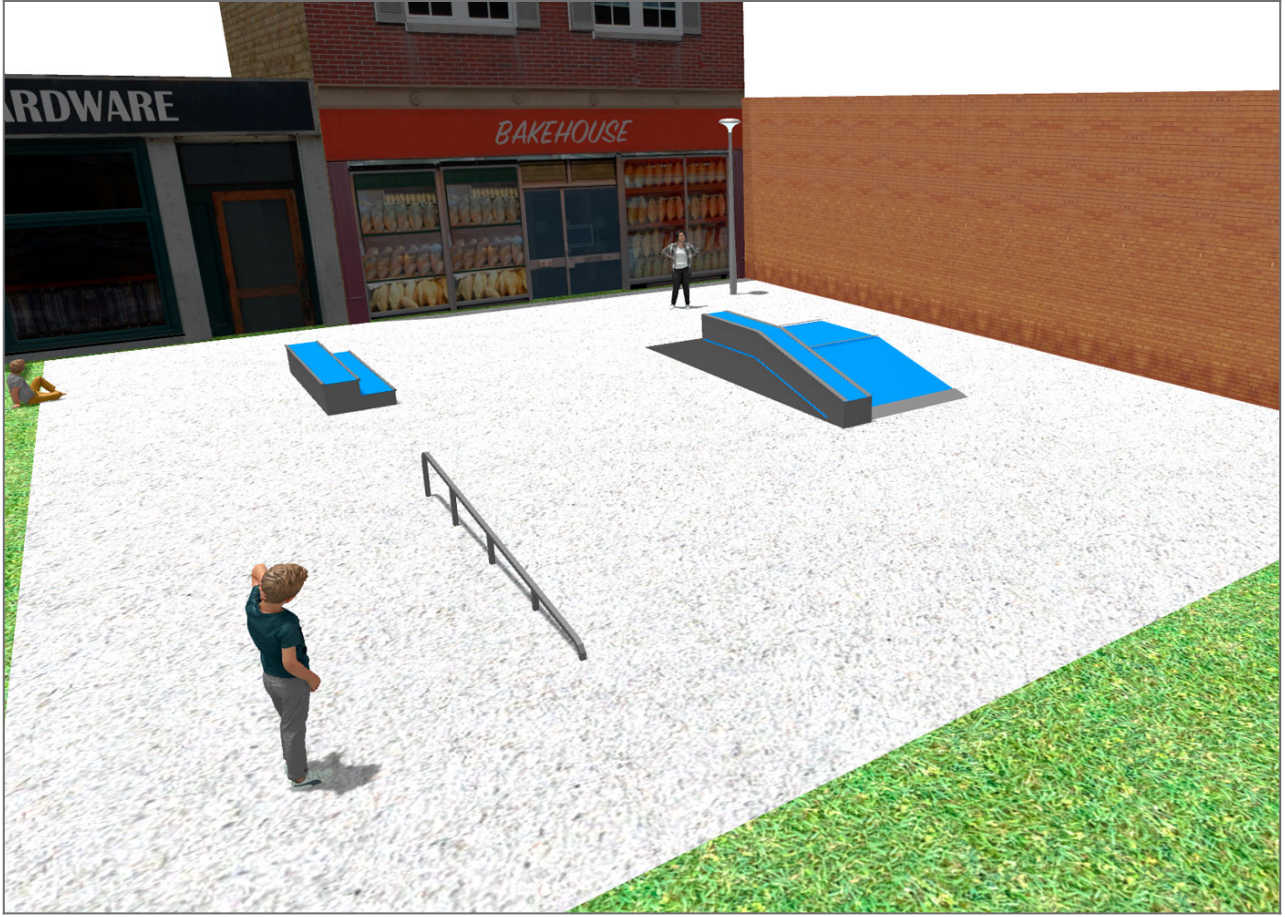
—Playground Equipment

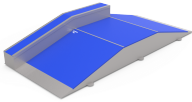
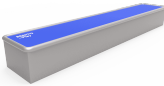





# BENITO

—Playground Equipment



Product	Description
<p>JSK9025-KBS</p> 	<p><b>One side Curb Box 60</b></p> <p>The Skates elements are of modular construction that allows with the minimum effort the ability to modify the situation of the modules according to the criteria of each group of skaters. with minimum maintenance and 100% resistant to UVA rays, ice and impacts. Great adherence to the ground. The surface is not heated. Based on modular construction.</p> <p><a href="#">Data Sheet</a></p>
<p>JSK1052-K</p> 	<p><b>Trick Box</b></p> <p>The Skates elements are of modular construction that allows with the minimum effort the ability to modify the situation of the modules according to the criteria of each group of skaters. with minimum maintenance and 100% resistant to UVA rays, ice and impacts. Great adherence to the ground. The surface is not heated. Based on modular construction.</p> <p><a href="#">Data Sheet</a></p>
<p>JSK1048-C</p> 	<p><b>Rail C</b></p> <p>The Skates elements are of modular construction that allows with the minimum effort the ability to modify the situation of the modules according to the criteria of each group of skaters. with minimum maintenance and 100% resistant to UVA rays, ice and impacts. Great adherence to the ground. The surface is not heated. Based on modular construction.</p> <p><a href="#">Data Sheet</a></p>