

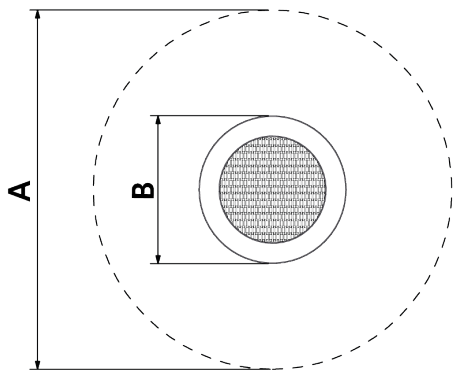
Trampoline CIRCULAR




JTRA

3+



Circular trampoline.



Ref.	A x B			
JTRA01	A=3750mm B=1250mm	11m2	0.9m	1
JTRA02	A=3900mm B=1400mm	12m2	0.9m	1
JTRA03	A=4000mm B=1500mm	12.60m2	0.9m	1
JTRA04	A=4100mm B=1600mm	13.20m2	0.9m	1
JTRA05	A=4250mm B=1750mm	14.30m2	0.9m	1
JTRA06	A=5500mm B=2000mm	23.8m2	0.9m	1
JTRA07	A=5750mm B=2250mm	26m2	0.9m	1

Materials:

Structure: Formed by galvanized metal frame, EPDM rubber protective collar.

Jump mesh: Produced by interlocking plastic pieces with non-slip surface and steel springs attached to frame.

- None of the materials requires a specific treatment for its disposal.
- If the product is subject to severe use, maintenance should be increased.
- Don't use the product before the installation/maintenance is ready.
- Please check the maintenance instructions.

Biggest part (mm): / Heaviest part (kg):

IMPACT ZONE: security area and ground coverings according to the EN1176-1:2017 standard.

Spare parts availability: 10 years.

Ground anchoring screws not included.

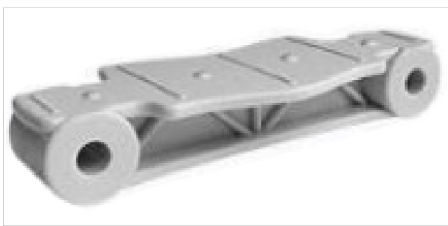
Playful features:



Projects:



RAL 9005



RAL 7035



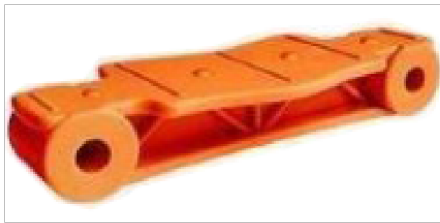
RAL 1018



RAL 6029



RAL 3020



RAL 2005



RAL 5005



RAL 4005

V. 2024-04-16 | The constant improvement and evolution of our products may result in some modifications of the technical specifications and characteristics of the products without prior notice.