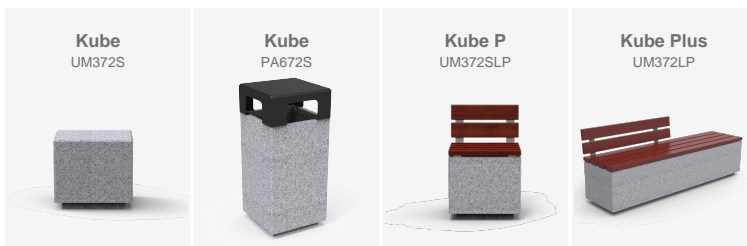


The El Llano square in Alcalá and the maritime promenade of Playa de San Juan have new benches and bins.

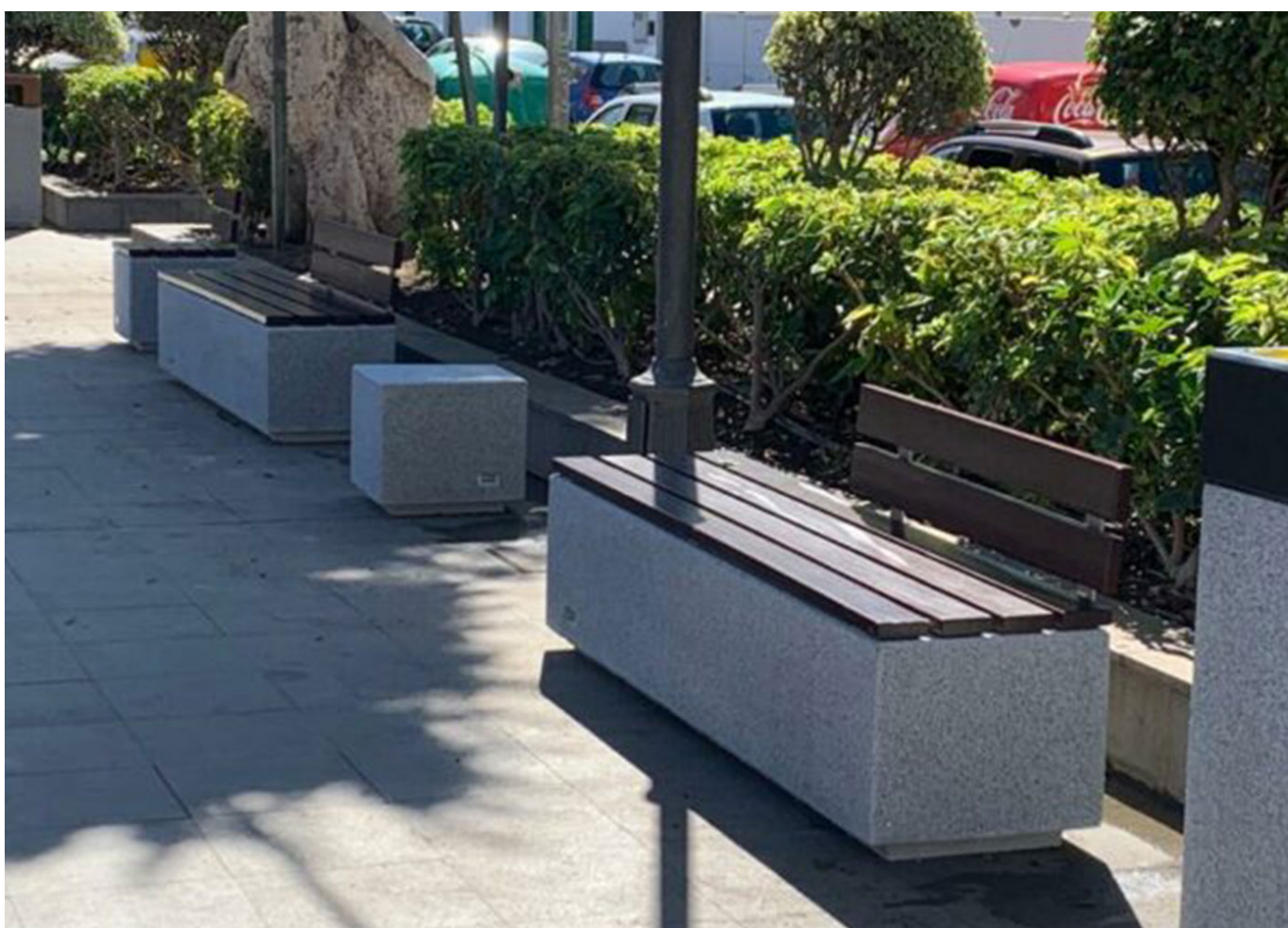


Guía de Isora is a municipality located in southwestern Tenerife. It presents a great natural wealth since a part of it belongs to the Corona Forestal Natural Park and another one to the Teide National Park.

It consists of 17 urban nuclei among which we can find Alcalá and San Juan, which already have new **BENITO benches and bins made of concrete**.

These products are resistant to high levels of salinity so they will increase the comfort of the inhabitants and tourists of El Llano square and the maritime promenade of Playa de San Juan.

This project is part of the recent renovation of street furniture carried out by Guía de Isora in the areas close to the coast.



The constant improvement and evolution of our products may result in some modifications of the technical specifications and characteristics of the products without prior notice.