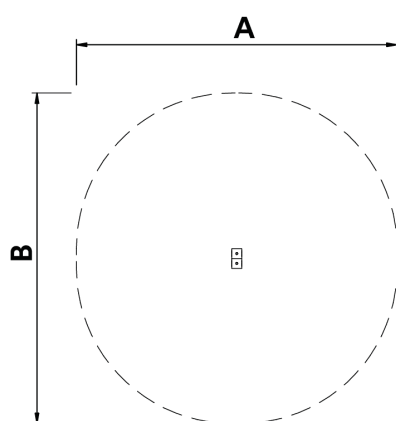


12+



Certified
EN16630
product



The **Work-fit** range is complete and all elements can be perfectly combined to create a customised circuit.

Work-fit allows you to combine walking or running with different exercises to maintain an active, healthy lifestyle. **Work-fit** is manufactured entirely from wood; it is therefore recommended to install it in natural environments.



A=3190mm



8m2



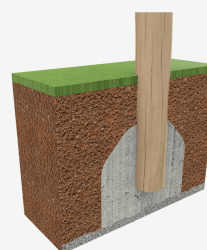
--m



1

B=3100mm

SB



Materials:

Structure, Laminated wood: scandinavian laminated pine wood treated in autoclave Class IV. Finished with two layers of Lasur paint. In case of being subjected to bad weather conditions, laminated pine wood can present some tiny cracks on the surface that do not reduce its durability at all. As regards resin and knots, please note that these are part of its natural appearance.

Metallic parts: AISI-304 stainless steel.

Fixings: electro galvanised and stainless steel quality 8.8 DIN267, AISI-304.

- None of the materials requires a specific treatment for its disposal.
- If the product is subject to severe use, maintenance should be increased.
- Don't use the product before the installation/maintenance is ready.
- Please check the maintenance instructions.

Biggest part (mm): 2600x90x90 / Heaviest part (kg): 11,50

IMPACT ZONE: security area and ground coverings according to the EN1176-1:2017 standard.

Spare parts availability: 10 years.

Ground anchoring screws not included.

Playful features:



Alternatives:

