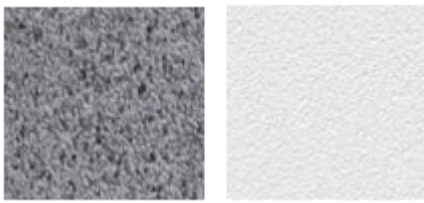




Concrete is a product resulting from the mixture of a binder (usually cement, sand, gravel or crushed stone and water) which, on hardening, acquires a resistance similar to that of the best natural stones.

Precast concrete has a series of advantages in all construction systems. This results in a practically irreplaceable whole potential of applications, as much for its physico-mechanical conditions as for its easy of modelling and adapting to determined shapes.



NB: These images are for illustrative purposes only

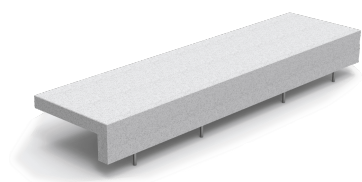
As a result, we can highlight the following advantages:

- Maintenance-free
- Economical
- Architectural
- Quick and easy installation
- Ecological

The great formal and functional quality as well as imagination, creativity and harmony with the environment are the keys to success of

our street furniture. Likewise, our products fulfil functional conditions in order to be useful.

Products:



UM371L



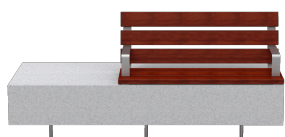
UM371LM



UM371L2



UM371LM2



UM371LP2



UM371LP



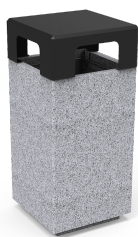
UM1372



UM1373



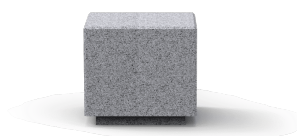
UM372M



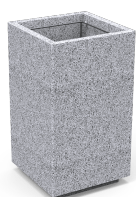
PA672S



UM372



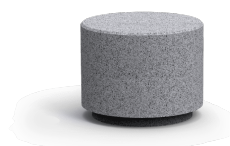
UM372S



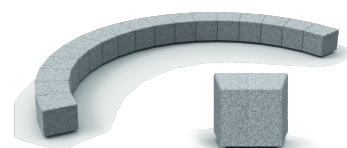
PA672



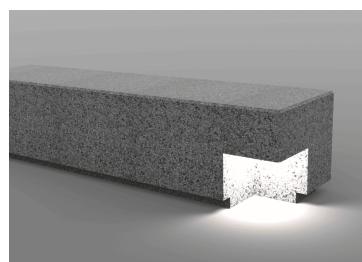
H372



UM348S



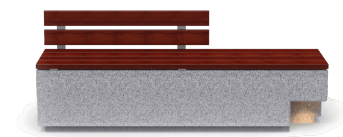
UM372SK



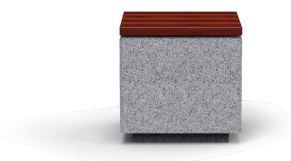
UM372L



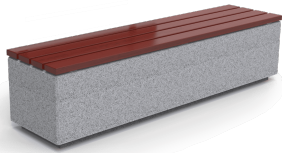
UM372LML



UM372LPL



UM372SLM



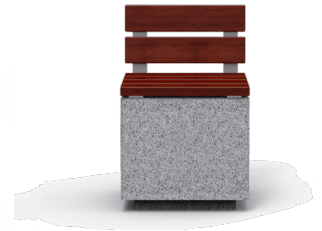
UM372LM



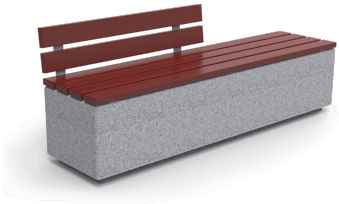
UM1673



PA673



UM372SLP



UM372LP



PA672S2



PA672S3



H373



UM1375G



UM1375P



UM359T



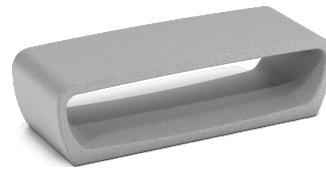
UM565



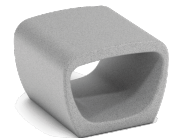
ICHPE40PP+ILCZ0



UM1619



UM359



UM359S



UM359SR



UM370



UM370RC



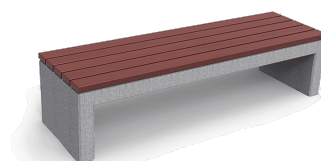
UM396H



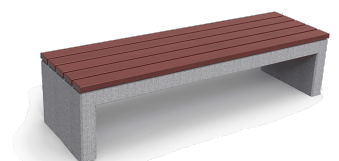
UM369



UM369G



UM369GLM



UM369LM