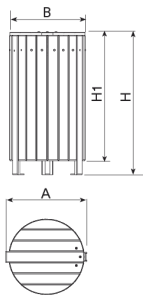
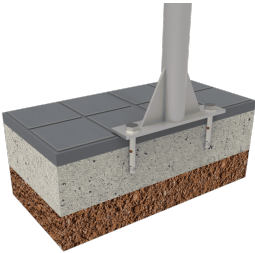




Litter bin made of ReBnew.
Stainless steel screws.
Recommended anchoring: by means of three M8 expansion bolts depending on the surface and the project.



Ref.	A	Ø B	H	H1
PA639TPR	460	460	910	820



[Project sheet](#) | [CAD](#) | [Catalogue](#) | [Mounting instructions](#) | [HD image](#)

The constant improvement and evolution of our products may result in some modifications of the technical specifications and characteristics of the products without prior notice.