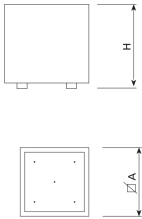


Planter made of corten steel sheet, designed to last over time without maintenance. No finish needed, thus eliminating processes that pollute the environment and contributing to sustainability.



Ref.	A	B	H
UM1160	Ø 750	-	750
UM1220	750	750	750



[Project sheet](#) | [CAD](#) | [Catalogue](#) | [3D](#) | [HD image](#)

The constant improvement and evolution of our products may result in some modifications of the technical specifications and characteristics of the products without prior notice.

Note: The rust of Corten steel evolves over time. Therefore, this material will rust sooner or later depending on the humidity and temperature levels.

Available in:



Epoxy primer coating and
MARSON polyester powder coated
finish (UM1220M).



The constant improvement and evolution of our products may result in some modifications of the technical specifications and characteristics of the products without prior notice.