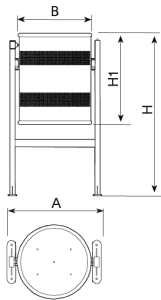
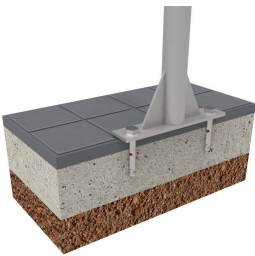


Litter bin made of steel treated with Ferrus, a protective process that guarantees high resistance to corrosion.



Ref.	A	Ø B	H	H1
PA606	545	440	950	520



The Ferrus treatment consists of three layers applied after shot cleaning all impurities: an electrolytic bath, an epoxy coating and a polyester GREY ral 7011 paint coating.
Recommended anchoring: by means of four M8 expansion bolts depending on the surface and the project.

Avaiable with:

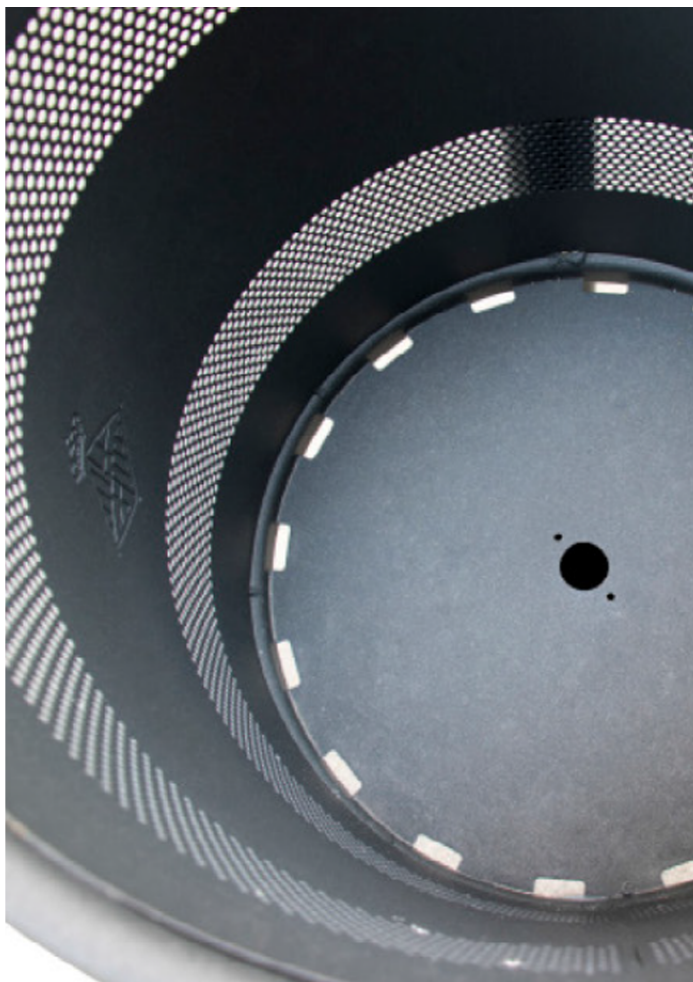


Built-in CLIP ashtray (PA600C).

Security locking system



Reinforced gusset plates



V. 2024-02-28 | The constant improvement and evolution of our products may result in some modifications of the technical specifications and characteristics of the products without prior notice.