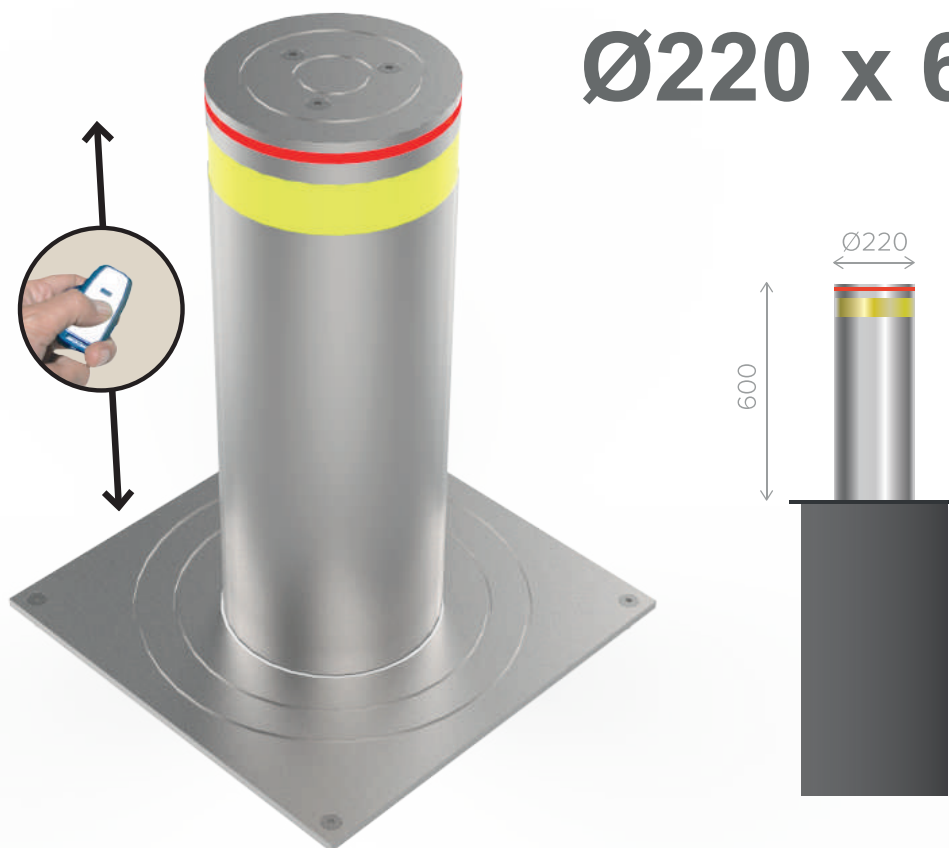


AUTOMATIC Ø220 x 600mm

H6006



Designed to guarantee a reliable and long-lasting access control in residential areas, driveways, and light commercial properties.

The bollard comes supplied as standard in AISI-304 stainless steel sleeve, 6mm thickness, Ø220 mm and 600 mm height and a yellow reflective band.

To give maximum security, includes a red led light crown warning when then bollard is rising or descending. The H6006 bollard can raise and lower in just 3-4 seconds thanks to its hydraulic engine.

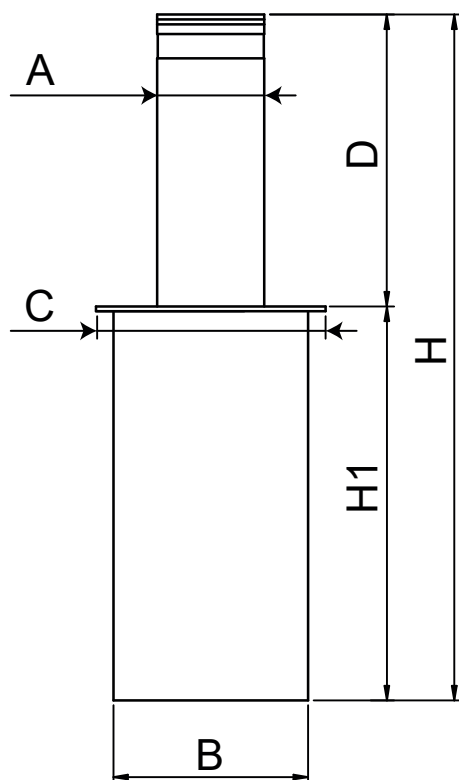
Stainless steel provides many benefits as little maintenance required (inspection & cleaning once a year by means of a vacuum cleaner).

Since the cylinder is brushed finished in the event of any scratch it will be easy to repair by scrubbing the surface.

The bollard remains in the extended position in case of power failure. You must manually lower the bollards if passage is necessary.

Note: In case of power failure, the bollards are only automatically lowered if they are equipped with a small battery.

[Technical specifications](#) | [CAD](#) | [Catálogo](#) | [Assembly Instructions](#) | [BIM](#) | [HD image](#)



Ref.	ØA	B	C	D	H1	H	
HM5009	220	400	472	600	810	1410	6

AUTOMATIC BOLLARD H6006

Height from the ground	600 mm
Bollard diameter	220 mm
Cylinder wall thickness	6 mm
Box dimensions	472 x 472 x 810mm
Bollard material	Stainless steel
Finish	Satin AISI 304
Voltage	230V 50Hz
Consumption	550W
Engine power	300W / 3000rpm
Speed	90mm/s 130mm/s
Rising strength	1,400NW
Temperature range	-20°C +80°C
IP Code	IP 67
Rising time	3 seconds
Lowering time	3 seconds
Control panel	BC20
Impact resistance	158.000 KJ
Luminous ring	Yes, RGB LED
Reflective band	Yellow level 3

